

# Emulsion adhesive for both screen printing and coating

An environmentally friendly adhesive that does not use VOC.

## Features

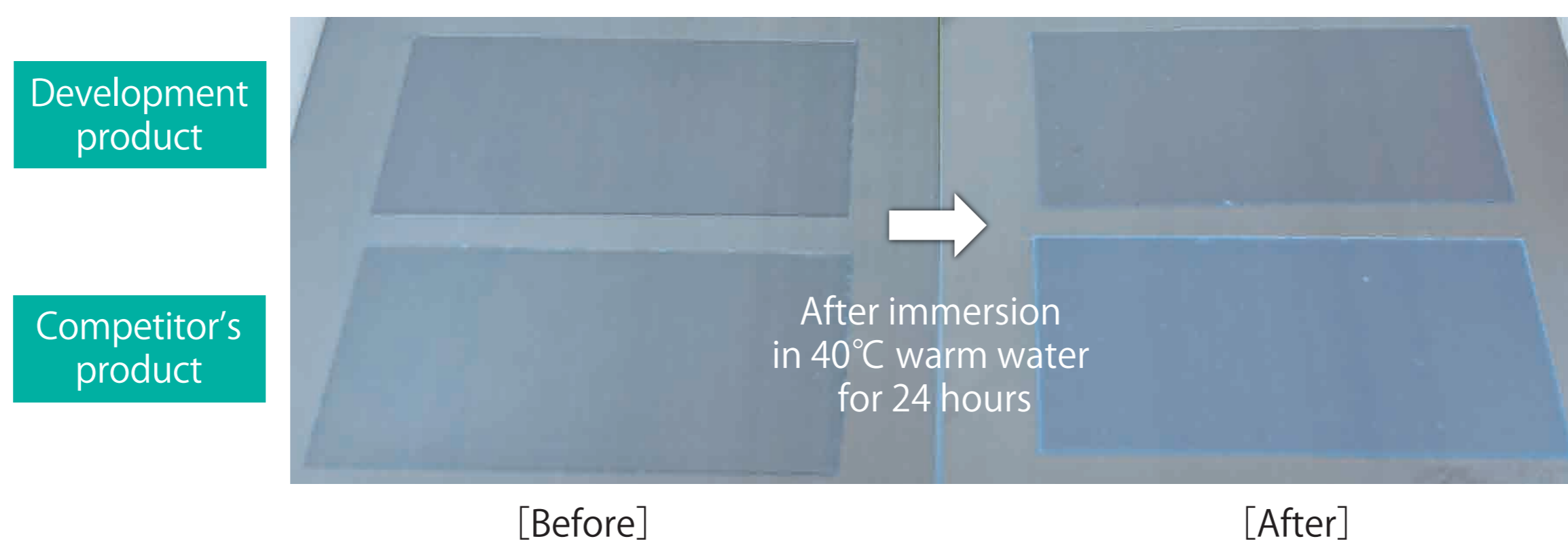
- ### High leveling ability

Generally speaking, emulsion adhesives have a rough adhesive surface and screen printing gauze tends to be noticeable, but this product has a highly smooth adhesive surface and can maintain the beauty of the product.
- ### Good handling properties

Adhesive removal is easy, so the printing plate is easy to clean after work. Compared to other companies' emulsion adhesives, cleaning time can be reduced by about 30 to 40% and cleaning solvent usage can be reduced by about 30%, which can be expected to improve work efficiency and reduce environmental impact.

※There are differences depending on the worker
- ### High water resistance

Appearance whitening caused by water immersion is milder than other companies' products.



## Applications

- As a printing glue for attaching nameplates and panel sheets to mechanical and electrical products
- For coating and printing on substrates with low solvent resistance
- Reducing environmental impact by switching from solvent-based adhesives

## Properties

item	method	General	Removable	Strong adhesive	Competitor's product
adhesive strength [N/10mm]	20min after pasting	3.7	2.2	11.7	7.1
holding power [mm]	9.8N load ,1h 25mm×25mm	0.5	0	0	0.6
ball tuck [No.]	J.Dow method ( $\theta=30^\circ$ )	7	6	less than 2	6

Adherent : SUS (BA) pH=7.0-8.0

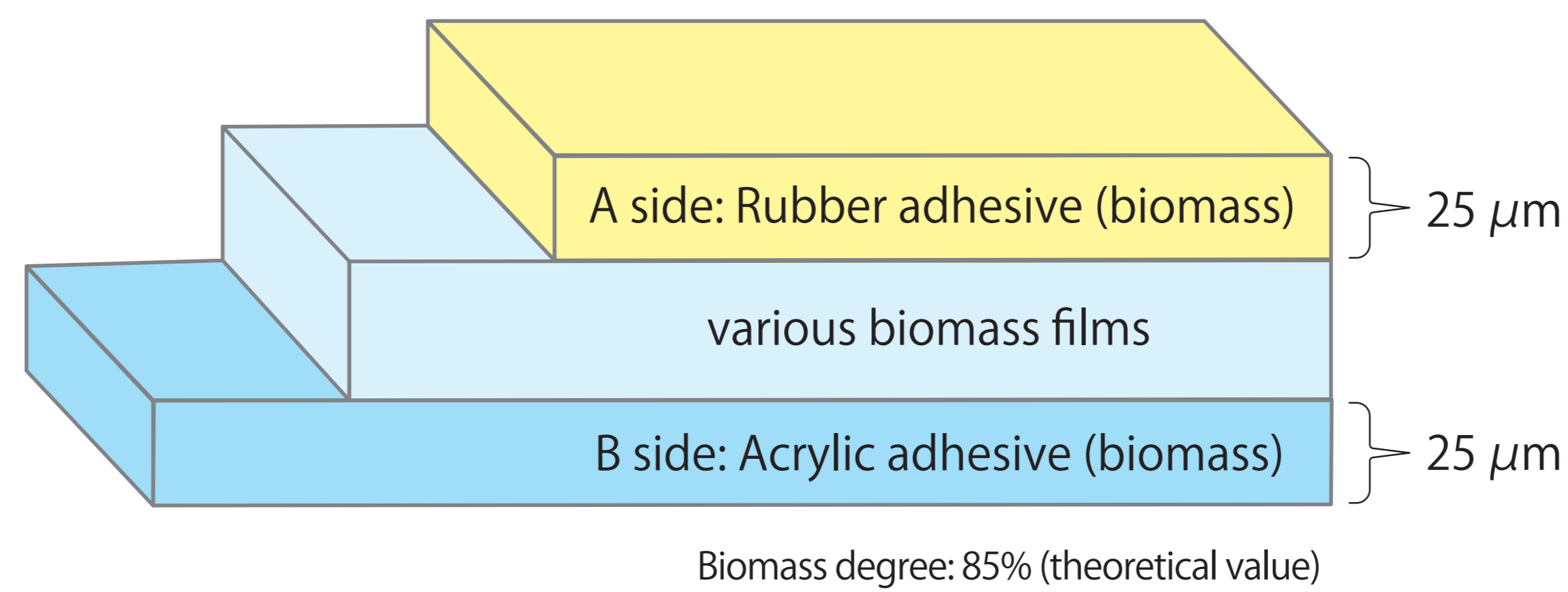
※Properties are not guaranteed values.

# Biomass liner-free double-sided tape

Development product

Double-sided tape without release paper made of biomass material

## Structure



## Features

- 1 | Completely environmentally friendly product made only from biomass materials
- 2 | Since there is no release paper, workability is good and there is no waste during use
- 3 | Different adhesive properties can be applied to side A and B



## Applications

- Fixing nameplates and various parts
- Fixing posters and notices
- Fixed magazine appendix

## Properties

item	method	A side	B side
adhesive strength [N/10mm]	20min after pasting	3.2	2.6
holding power [mm]	9.8N load ,1h 25mm×25mm	0	0.2
ball tuck [No.]	J.Dow method ( $\theta=30^\circ$ )	10	5

Adherent : SUS (BA)

※Carrier : Cellophane

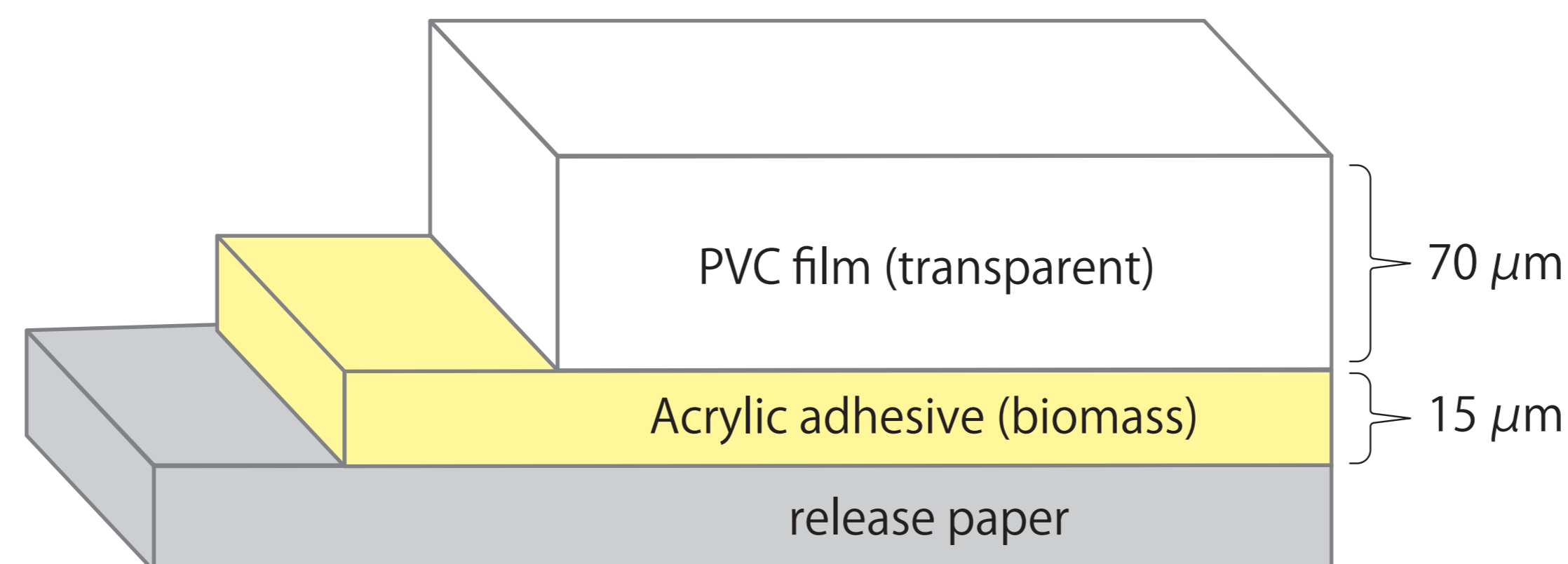
※Properties are not guaranteed values.

# High heat resistant biomass slightly adhesive sheet

Development product

An adhesive sheet made of biomass material with excellent heat resistance and removability.

## Structure



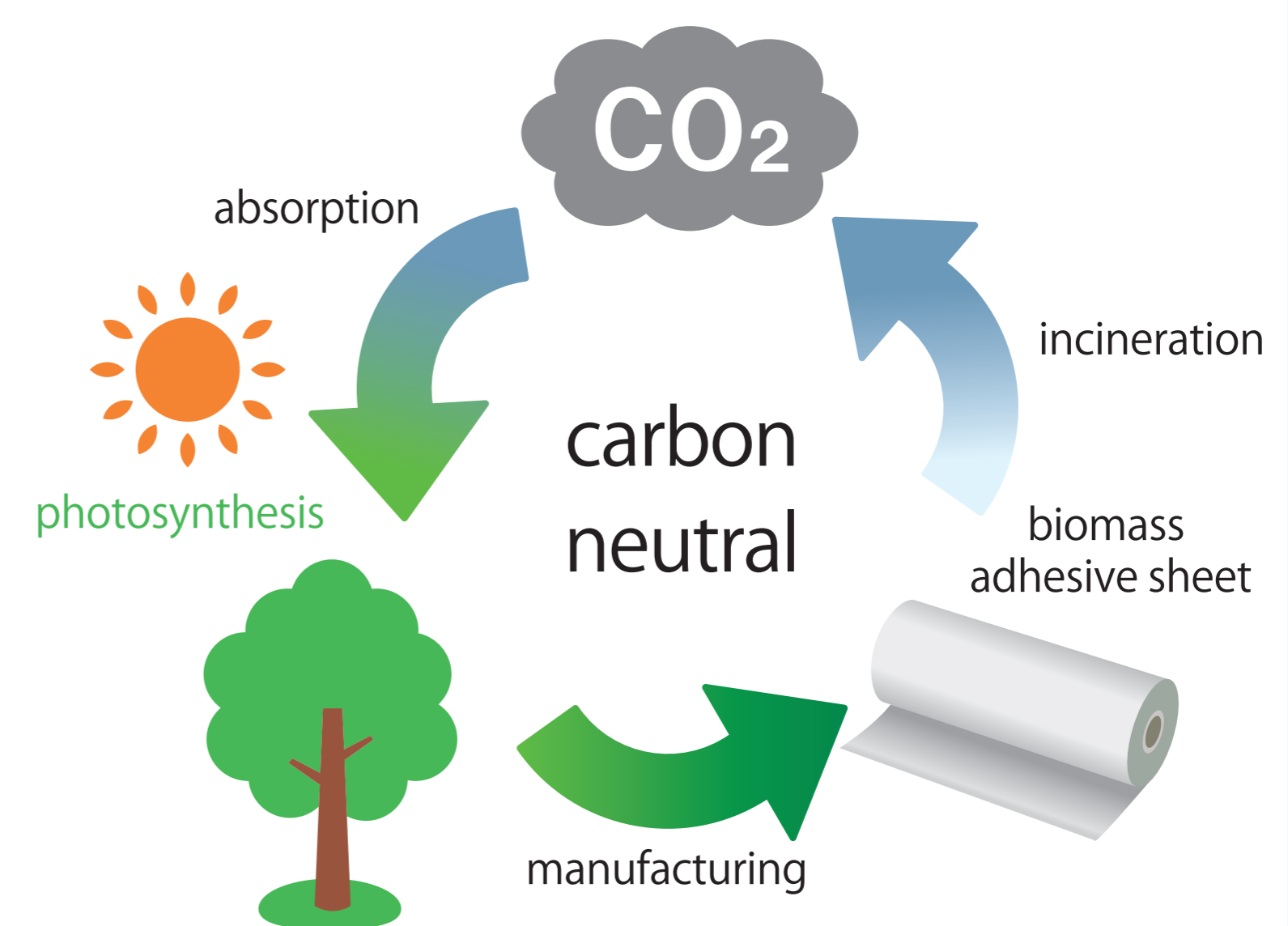
## Features

- 1 Uses environmentally friendly biomass adhesive

Biomass degree: 20% (theoretical value)

- 2 Can also be used for masking during high temperature baking in the painting process of solvent-based paints.

- 3 Although it is an environmentally friendly product, it has the same heat resistance and removability as conventional completely petroleum-based adhesives.



## Applications

- Masking in the painting process
- Application for cutting letters and pasting labels (transfer sheet)

## Properties

item	method	Development product	Competitor's product
adhesive strength [N/10mm]	20min after pasting	0.18	2.6
holding power [mm]	9.8N load ,1h 25mm×25mm	0	0
adhesive strength after heating [N/10mm]	After heating at 150°C × 1h and cooling	1.7	7.8
Appearance and peeling mode after heating	After heating at 150°C × 1h and cooling	no change	glue residue

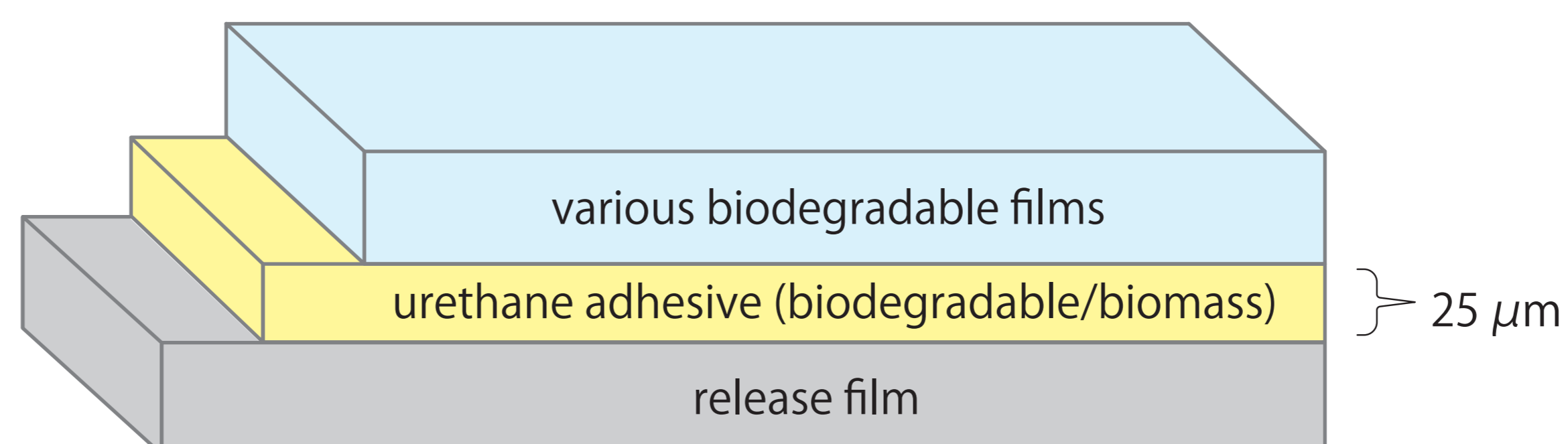
Adherent : SUS (BA)

※Properties are not guaranteed values.

# Biodegradable adhesive sheet

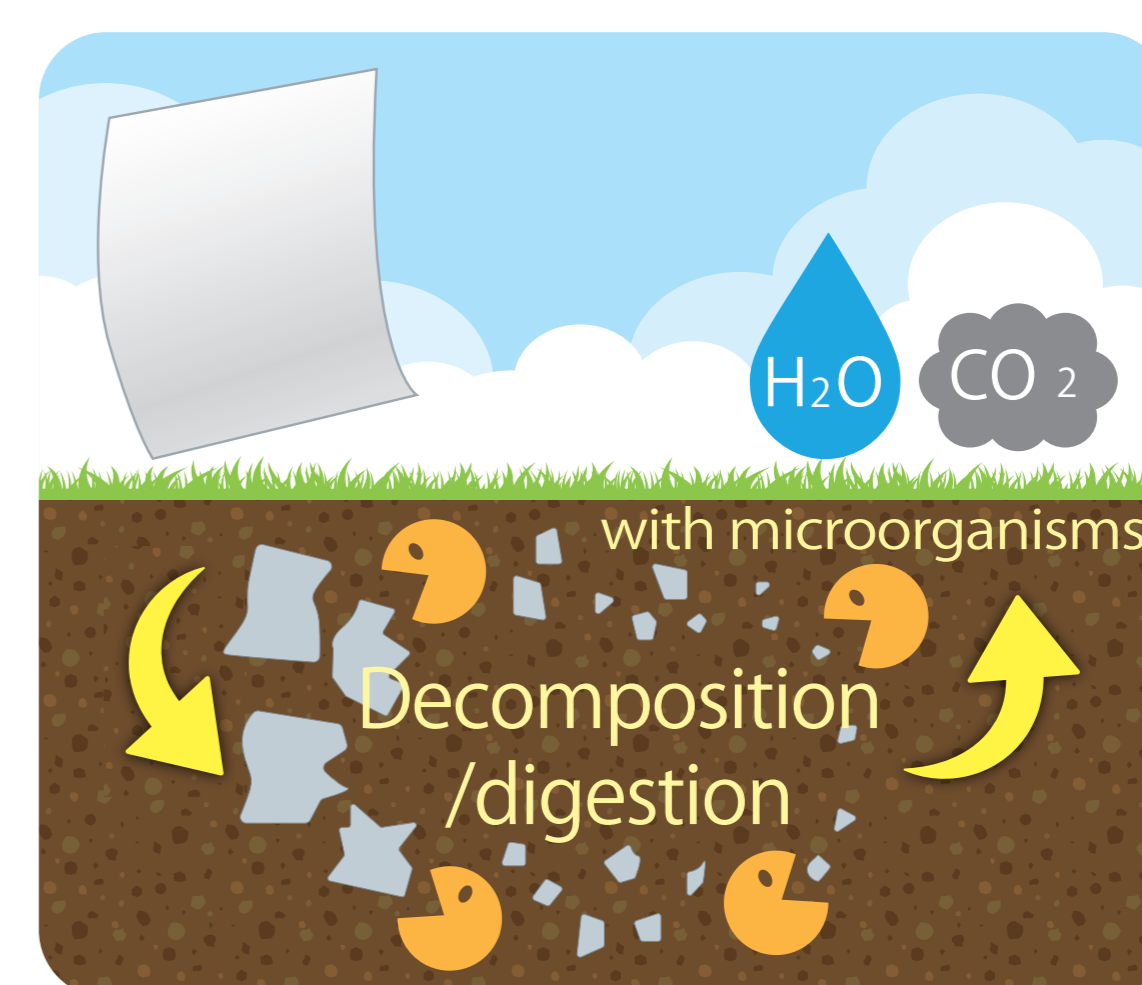
An adhesive sheet with a biodegradable function and low environmental impact.

## Structure



## Features

- 1 | Environmentally friendly adhesive sheet using biodegradable film and adhesive  
Biodegradability: 96% (theoretical value)
- 2 | Also has biomass properties  
Biomass degree: 71% (theoretical value)
- 3 | Biodegradable in approximately 3 months



initial state	In the compost		
	1 month later	2 month later	3 month later
			

## Applications

- Agriculture and forestry materials (fixing tape, seedling pot labels, binding tape, etc.)
- Food containers and packaging materials
- For promoting brand image, such as packaging for cosmetics

## Properties

item	method	Development product
adhesive strength [N/10mm]	24 hour after pasting	5.3
holding power [mm]	9.8N load ,1h ,25mm×25mm	0
ball tuck [No.]	J.Dow method ( $\theta=30^\circ$ )	7

Adherent : SUS (BA)

※Carrier : Cellophane

※Properties are not guaranteed values.